

HYSPLIT

Samantha Faulstich
ATMS 748

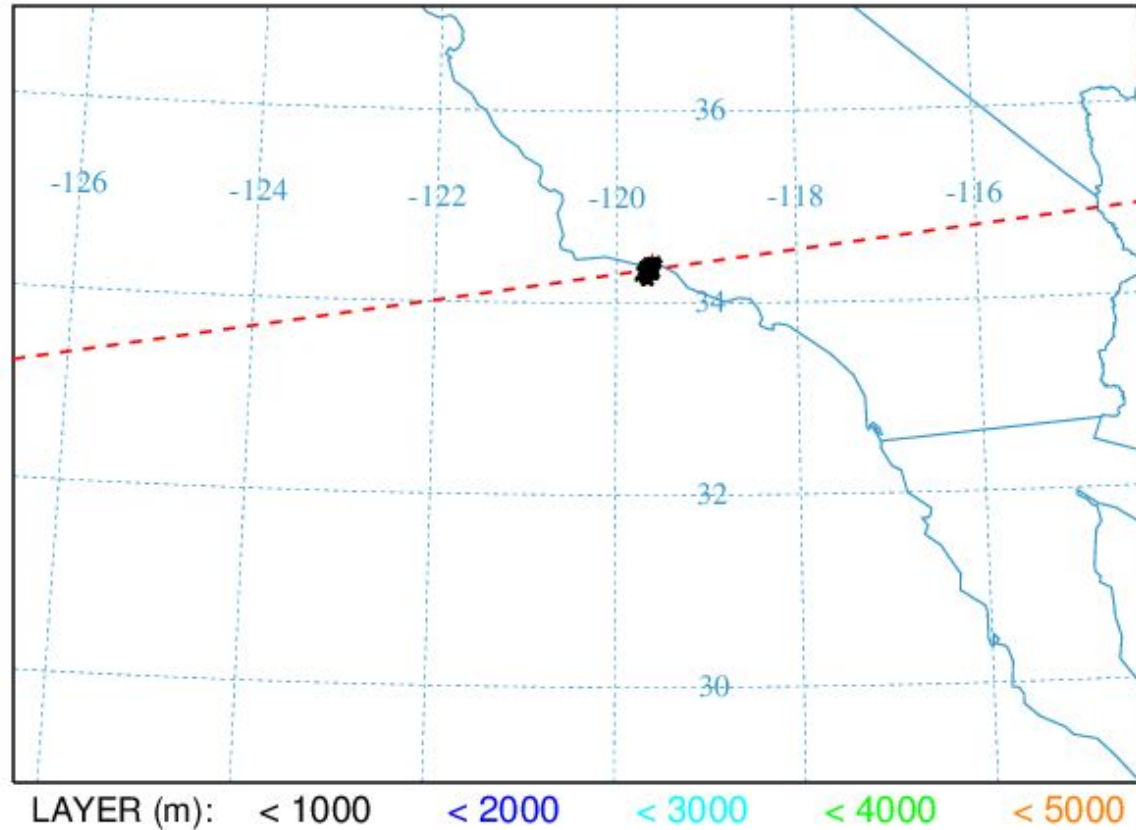
What is HYSPLIT?

- Hybrid Single-Particle Lagrangian Integrated Transport model
 - Lagrangian frame of reference: specific air parcels are followed through time
- Air parcel trajectories and complex transport, dispersion, chemical deposition and transformation
- Backwards or forwards trajectory calculations
- Variety of particles (PM_{2.5}, radioactive particles, volcanic ash, ozone, dust)

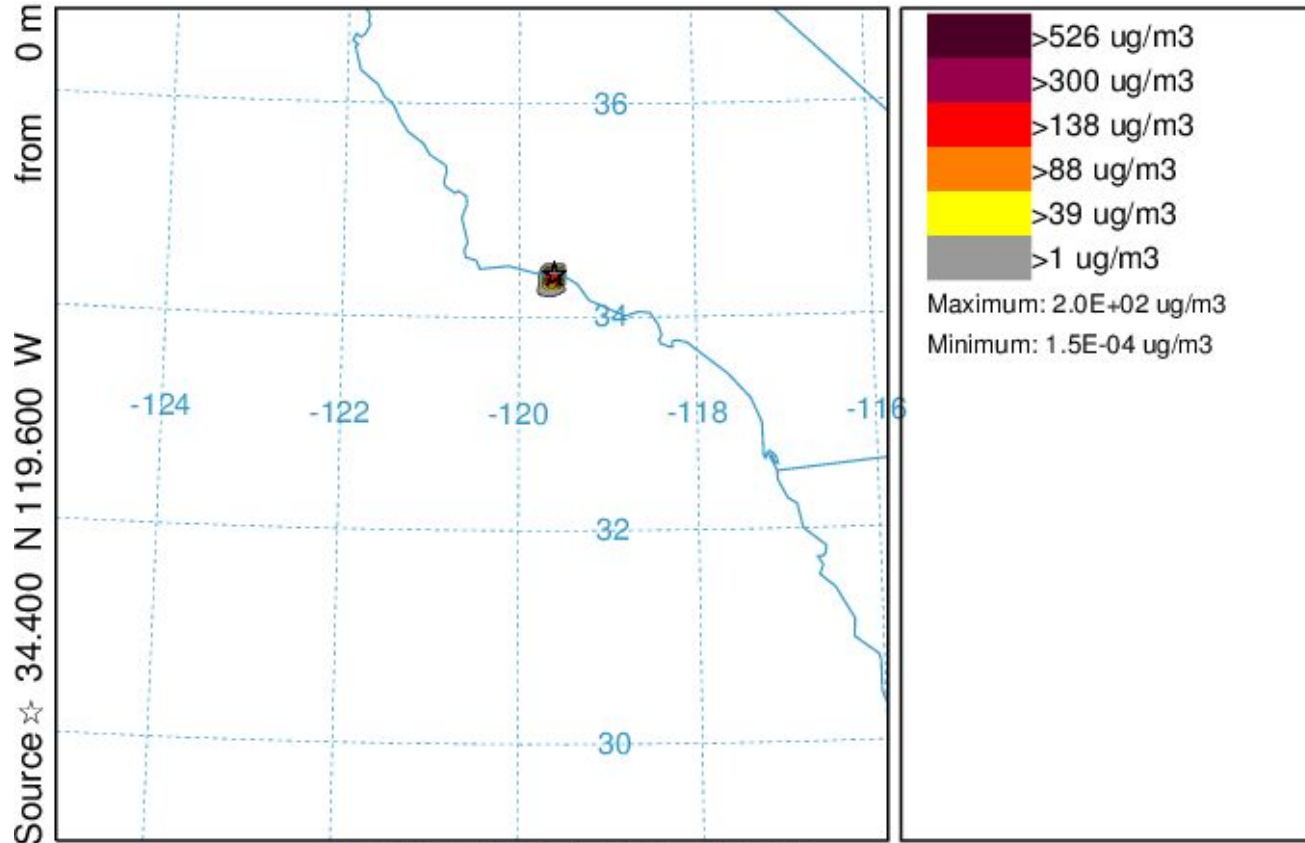
History

- 1949: back trajectory sourcing of radioactive particles from Soviet atomic testing detected by aircraft.
 - All calculations done by hand using winds from twice daily weather balloon data
 - Remarkably accurate
- 1960s: MESODIFF model in response to safety concerns about radioactive material release at Idaho's National Reactor Testing Station.
 - Gaussian puff model using gridded data to account for spatial variability of horizontal wind flow near the surface
- 1970s: Gaussian puff model and trajectory calculations combined to compute long-range concentration models of specific particles
- 1980s: the first version of HYSPLIT as we know it

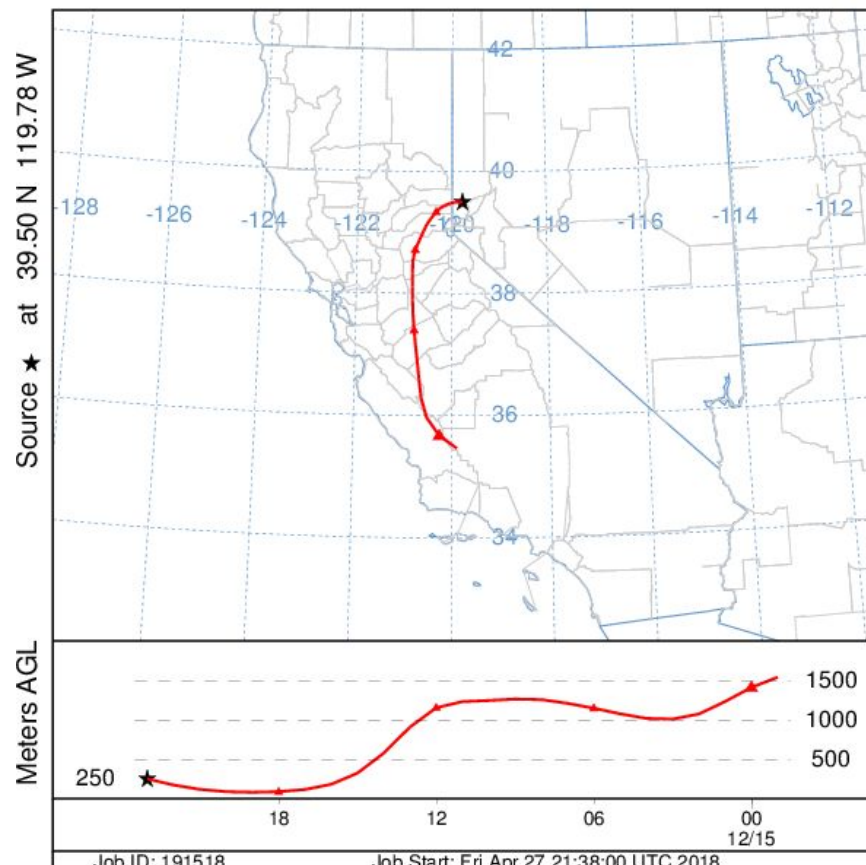
Particle Cross Section Example



Particle Concentration Example

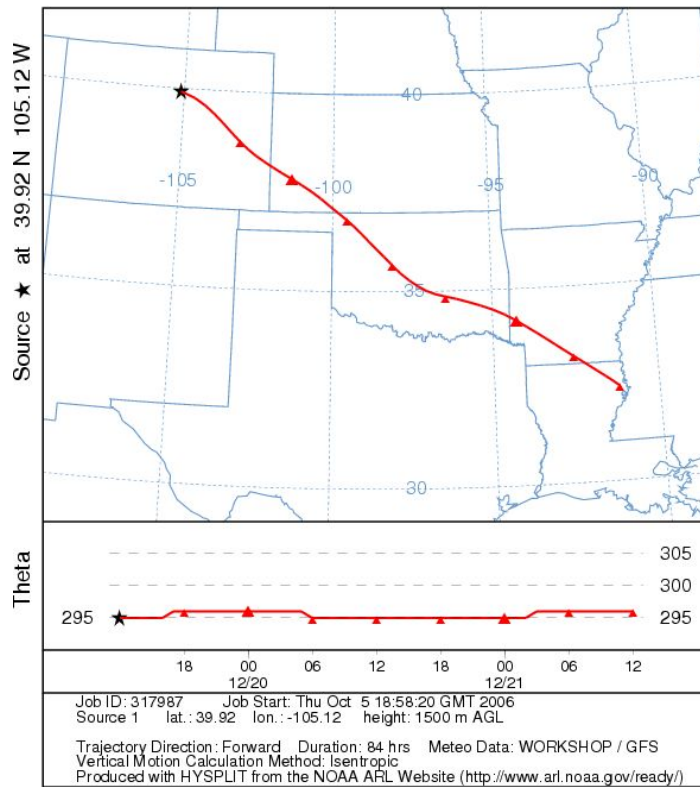


Back Trajectory Example

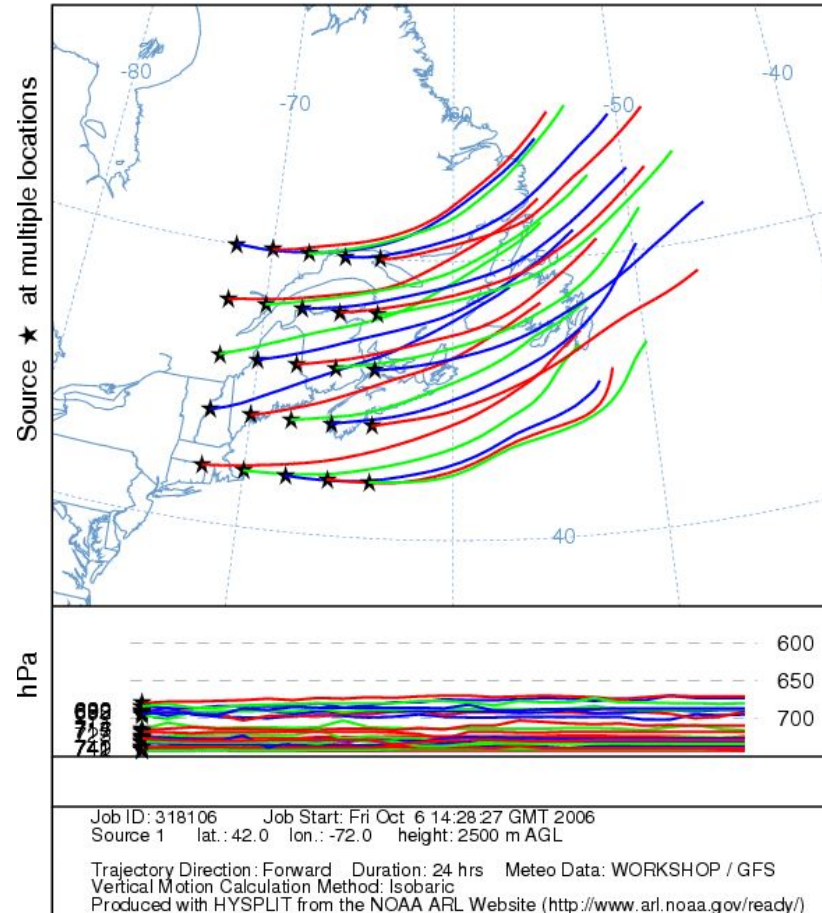


Forward Trajectory Example

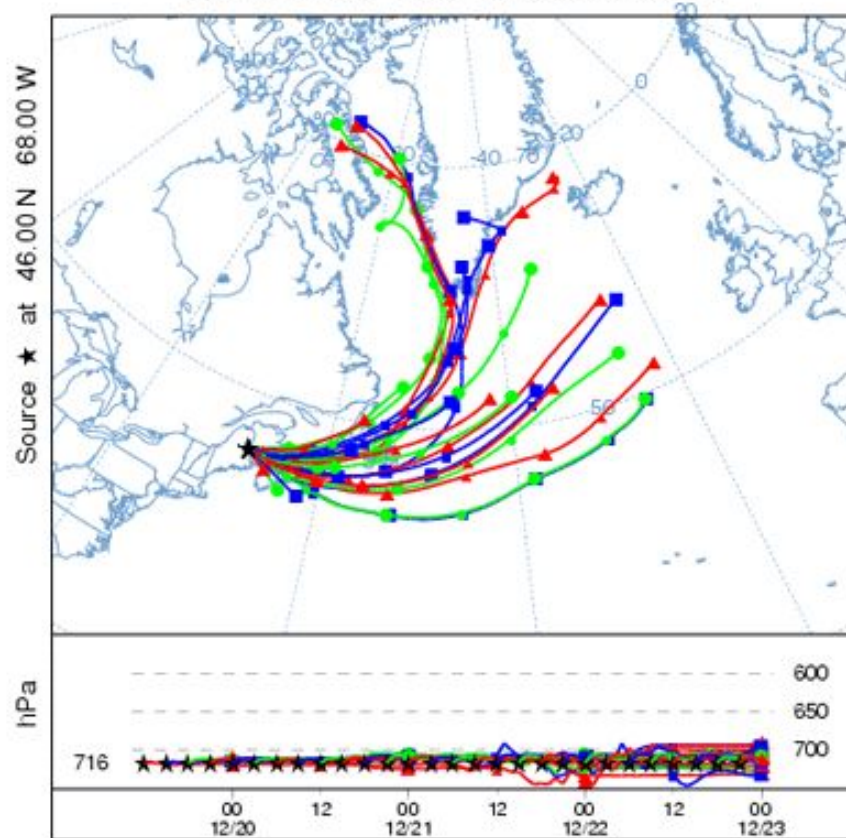
NOAA HYSPLIT MODEL
Forward trajectory starting at 12 UTC 19 Dec 05
12 UTC 19 Dec NAM Forecast Initialization



NOAA HYSPLIT MODEL
Forward trajectories starting at 12 UTC 19 Dec 05
12 UTC 19 Dec NAM Forecast Initialization



NOAA HYSPLIT MODEL
Forward trajectories starting at 12 UTC 19 Dec 05
12 UTC 19 Dec NAM Forecast Initialization



References

- <https://ready.arl.noaa.gov/HYSPLIT.php>
- <https://journals.ametsoc.org/doi/full/10.1175/BAMS-D-14-00110.1>
- https://en.wikipedia.org/wiki/Lagrangian_and_Eulerian_specification_of_the_flow_field
-